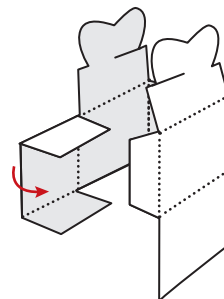
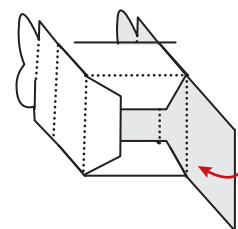


INSTRUCTIONS

- 1 Cut out along solid black lines.
- 2 Score and fold along dotted lines.
- 3 Glue side tab as indicated.



- 4 Close the bottom with the large tab on the outside and glue in place.



- 5 To close the lid, fold the two small tabs and then fold the large tabs in. Slide the boot tabs together to close.

