

Paper toy: Puss In Boots

INSTRUCTIONS

YOU WILL NEED:

- Metal-edged ruler
- Butter knife
- Scissors or craft knife
- Cutting mat (optional)
- Multipurpose glue



GETTING STARTED

- 1** Score all the pieces: Using a ruler as a guide, run the back side of a butter knife firmly along all dashed and dotted lines.



- 2** Using scissors or a craft knife and cutting mat, cut out all pieces along solid lines.

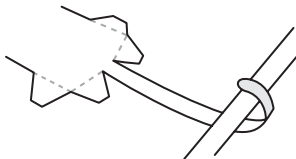


- 3** Fold all pieces along score lines, using the folding key below as a reference.

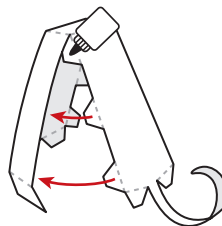


ASSEMBLY

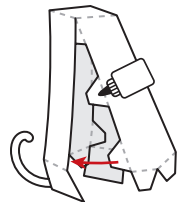
- 4** Curl the tail around a pencil.



- 5** Glue the tabs along the back of the body piece to the inside of the side flaps.



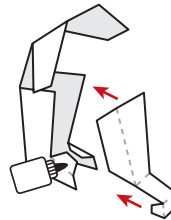
- 6** Glue the tabs along the front of the body piece to the inside of the side flaps.



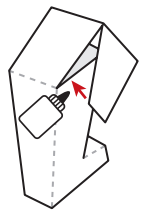
- 7** Glue the tabs on the bottom of the body piece to the inside of side flaps.



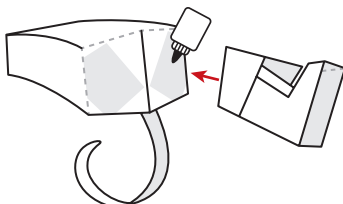
- 8** Place glue on tabs of both boot pieces. Glue front of boot to main boot piece. Repeat with other boot.



- 9** Fold top piece of boot over, glue side flaps in place.



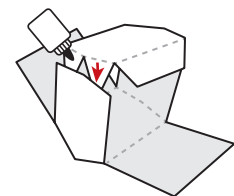
- 10** Glue top of boot to bottom of body where indicated by shaded area on artwork. Repeat with other boot.



- 11** Glue tabs along sides of head to adjacent sides.

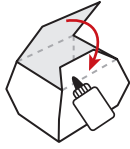


- 12** Glue remaining two tabs in place on side of head.

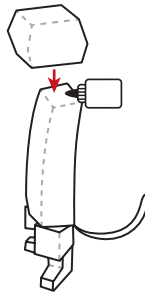


ASSEMBLY CONTINUED

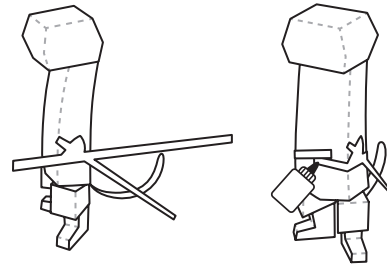
- 13** Complete head by gluing tabs to flaps on top and bottom of head.



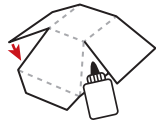
- 14** Glue head to body aligning back of head to back of body.



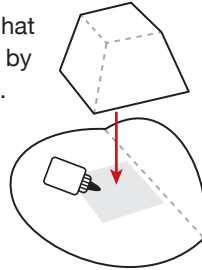
- 15** Glue belt pieces together in front.



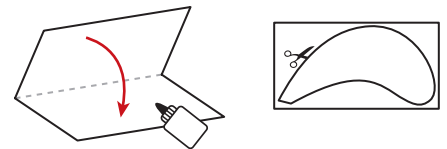
- 16** Glue tabs on sides of hat to adjacent sides.



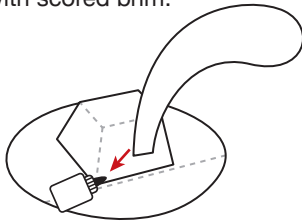
- 17** Glue tabs on bottom of hat to brim where indicated by shaded area on artwork.



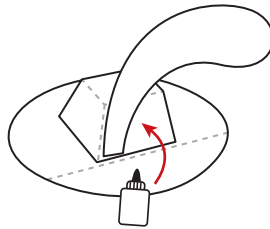
- 18** Glue and fold feather piece in half. Once dry, cut out along solid edge.



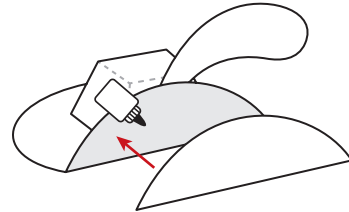
- 19** Glue feather to side of hat with scored brim.



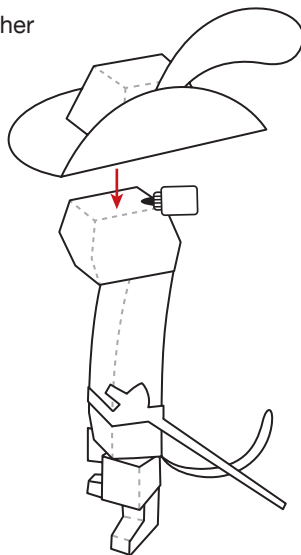
- 20** Glue brim up to side of hat.



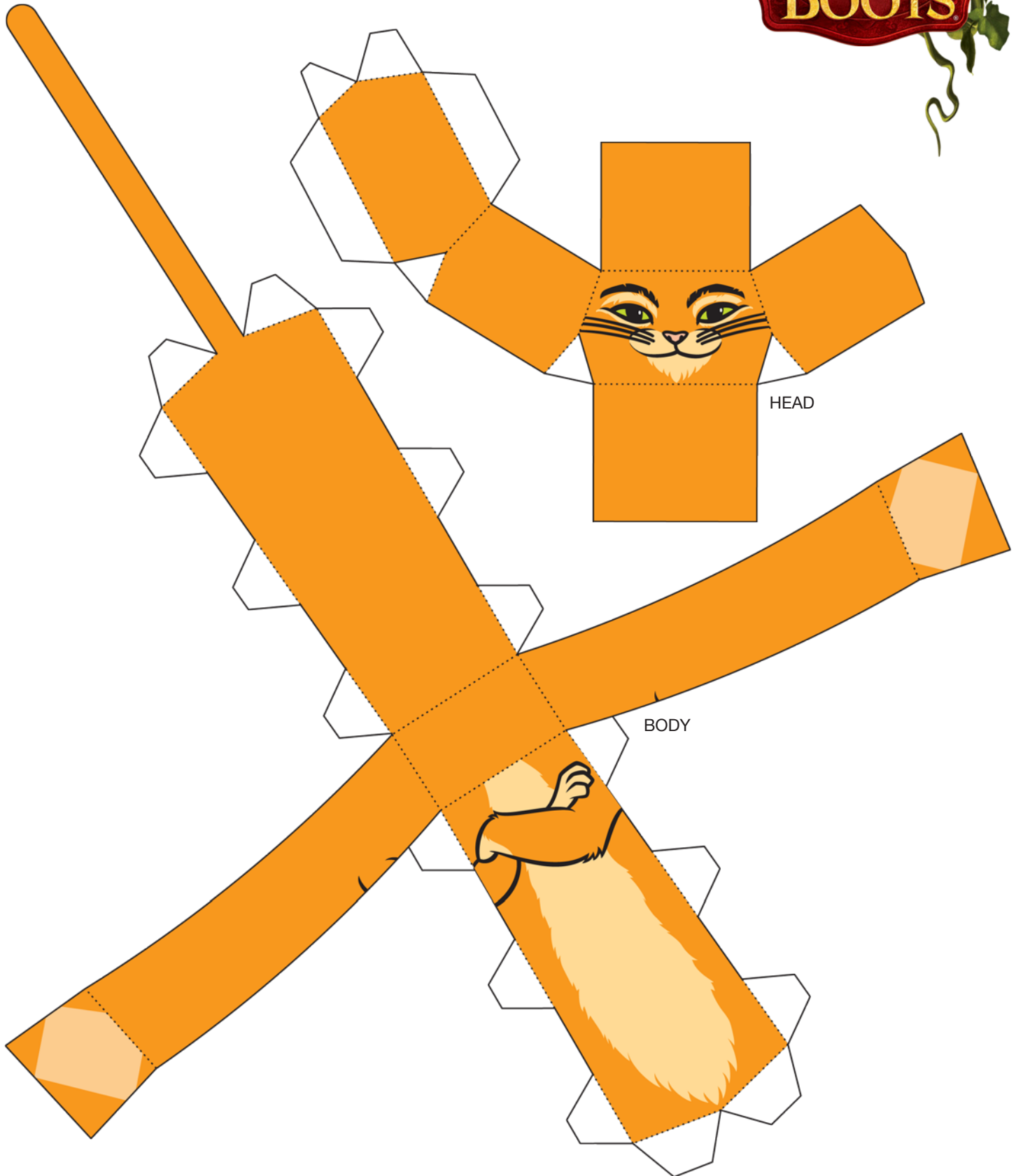
- 21** Glue side of brim to exposed side of folded brim.



- 22** Glue hat to top of head with feather on Puss' left side. You're done!



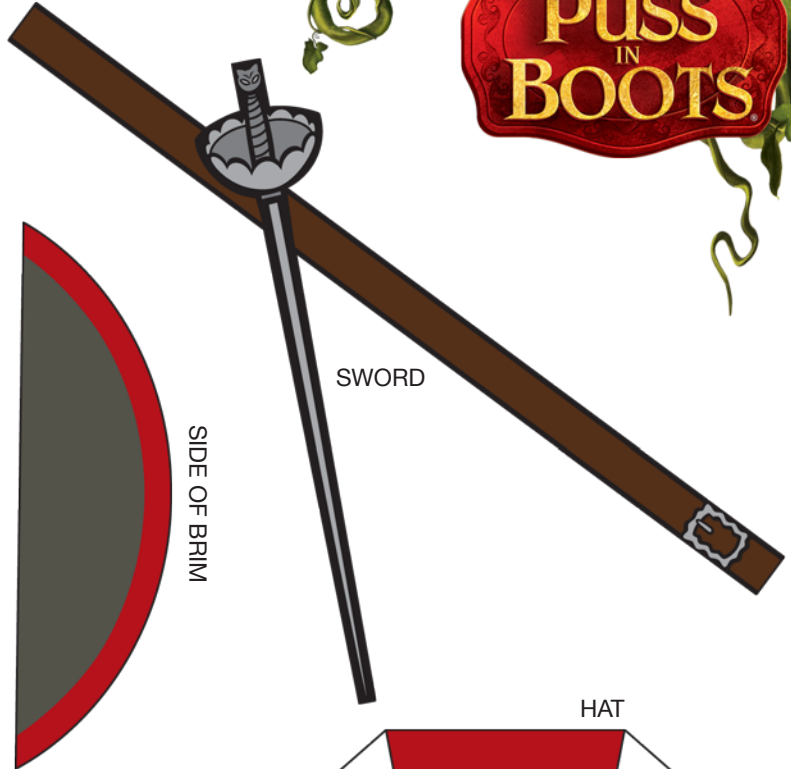
Paper toy: Puss In Boots



Paper toy: Puss In Boots



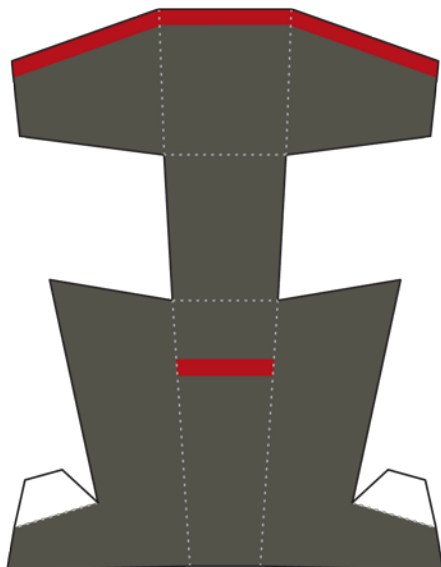
FEATHER



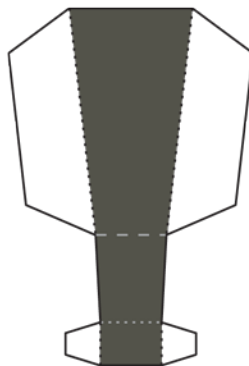
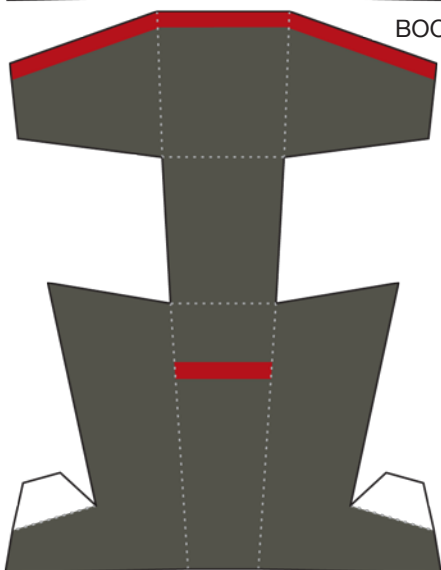
SWORD



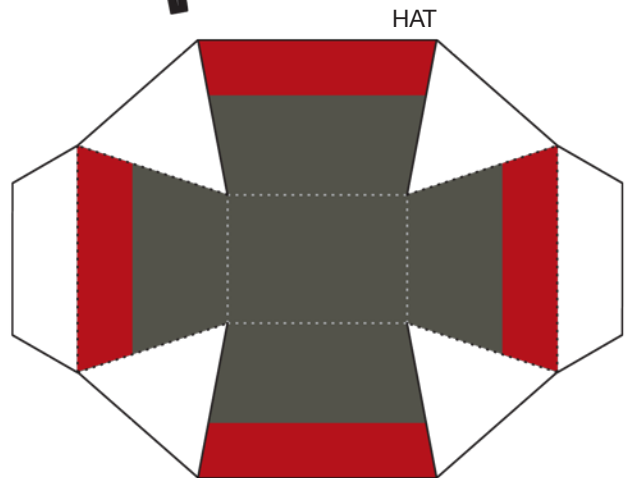
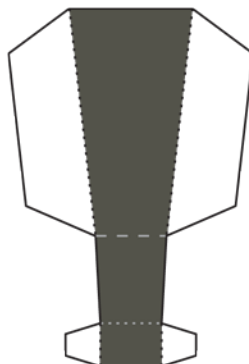
SIDE OF BRIM



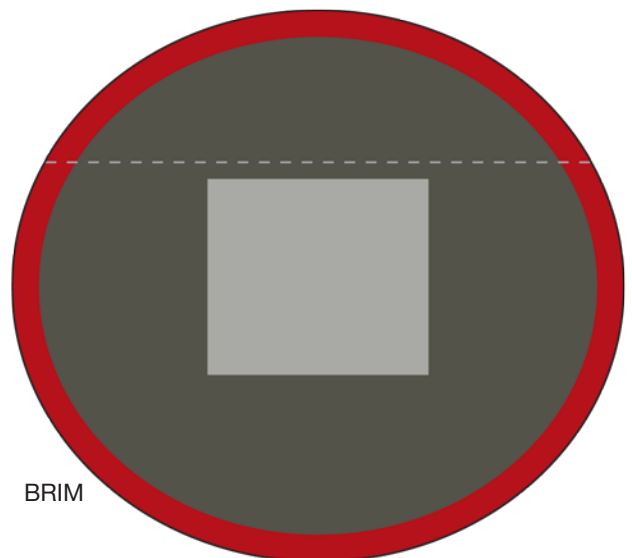
BOOTS



FRONTS OF BOOTS



HAT



BRIM